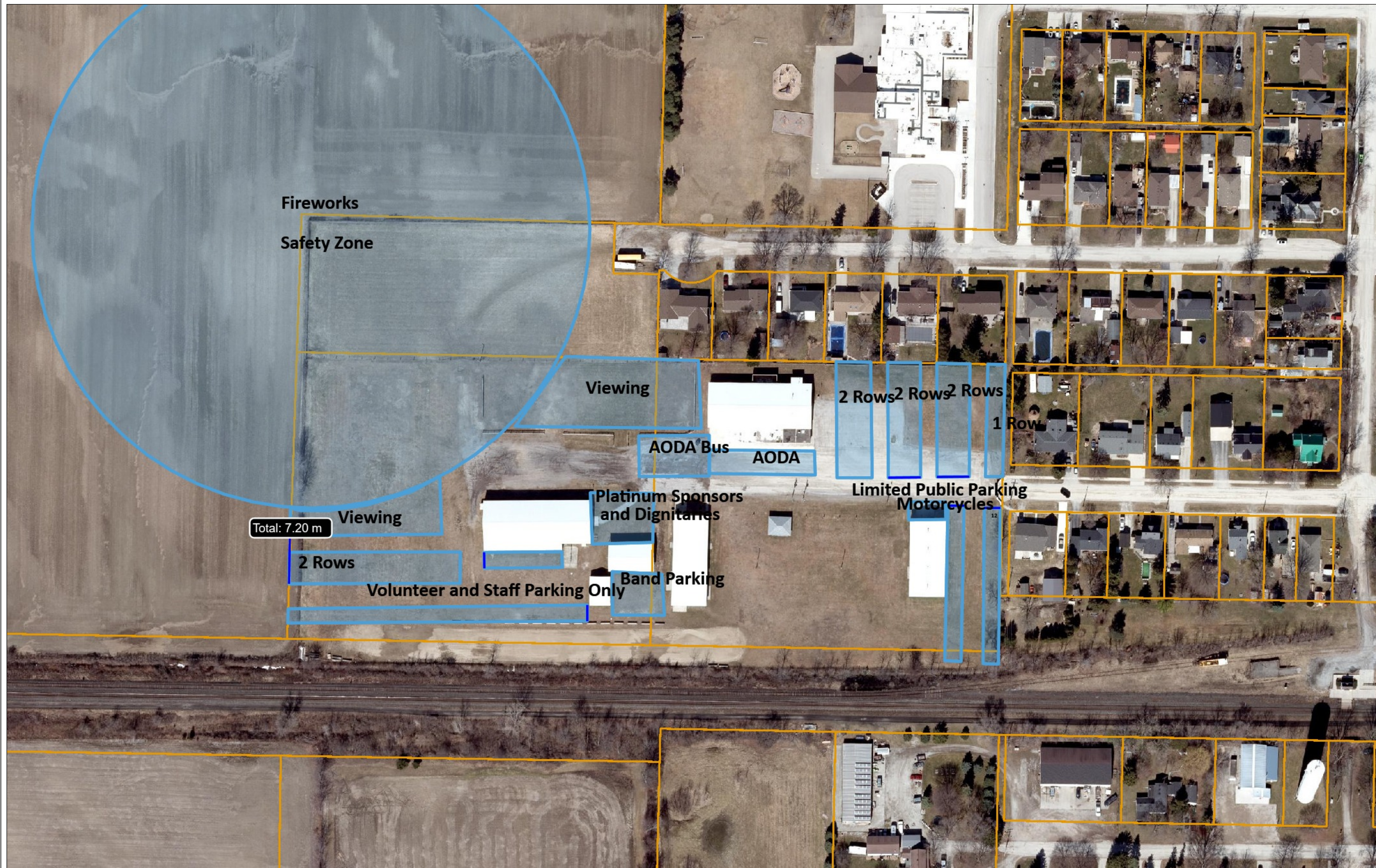


# 25th Anniversary Celebration Parking Plan



## Legend

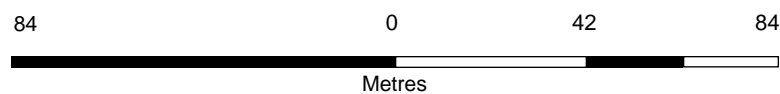
- Municipal Drain Features
- Ownership Parcels
- Parcels

## Location



## Notes

- Limited Parking on site, additional areas with parking include:
- Foodland
  - Via Station
  - School
  - Along local streets



1: 1,652



This product is for informational purposes and may not have been prepared for, or be suitable for legal, engineering, or surveying purposes. Users of this information should review or consult the primary data and information sources to ascertain the usability of the information.

County of Lambton



789 Broadway St  
Wyoming, ON N0N 1T0  
www.lambton.ca